



Project Name: KLCC
Client: Private
Location: Kuala Lumpur, Malaysia
Project Conception: October 2012
Project Status: Invited Competition
Area: 41,500 sqm
Project Value: N/A

Fourfoursixsix were invited to provide a proposal for a large-scale luxury residential scheme design on an important site in Kuala Lumpur City Centre.

Archetypal residential high-rise buildings often consist of duplicate stacked façades and inelegant balcony spaces that fail to differentiate themselves both aesthetically and functionally. We felt these characteristics were contrary to the concepts of luxury and high quality design that are at the forefront of the project.

Key to a successful design solution was to consider the experiential benefits to users, sustainable methods of construction and inhabitation, and flexibility in design.

The scheme considers pure geometric elegance and luxurious minimalism as central design concepts, incorporating climatically comfortable living spaces that provide superlative views.

The scheme design is based around two interlocking geometric forms which respond to a series of experiential, spatial and environmental factors. Where connected, differing areas of public and private spaces are formed depending on specific programmatic requirements. When separated, they provide distinct towers of private accommodation in which views, light and privacy are all maximised.



Fig. 1. Ground floor plan



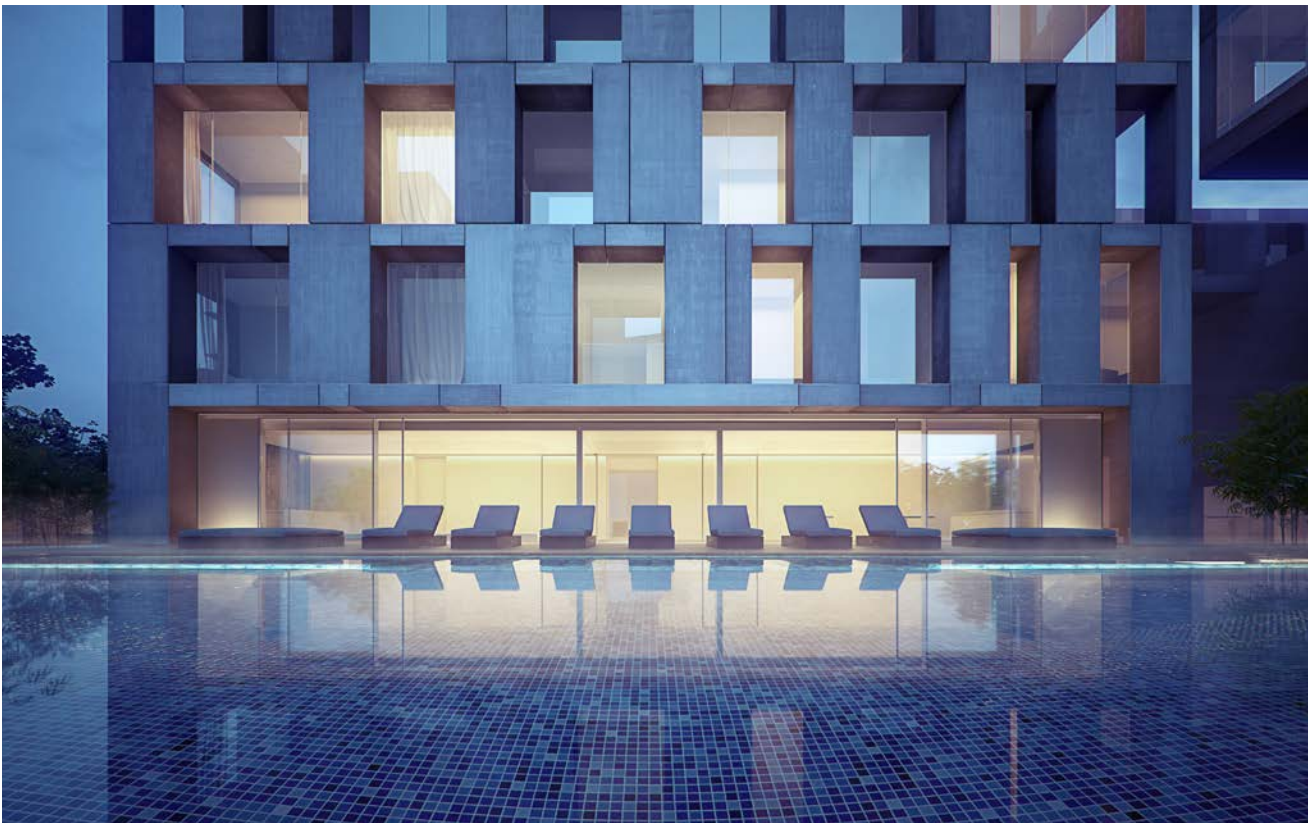




Fig. 1. Floor plans

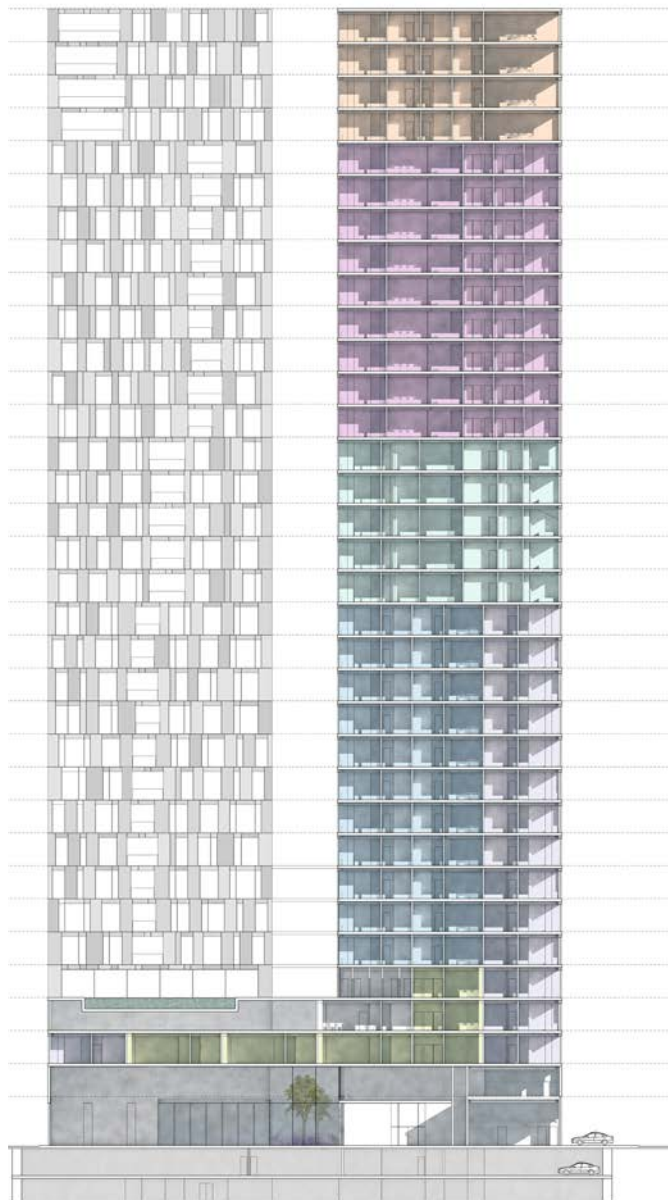


Fig. 2. Long Sectional diagram

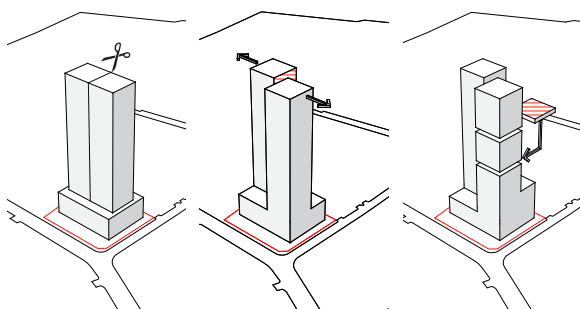


Fig. 3. Schematic diagrams